

# IRP2010 Presentation

Clyde Mallinson

Clean Energy Projects

December 3 2010



# The technology

## Concentrating Solar Power (CSP)

perceived

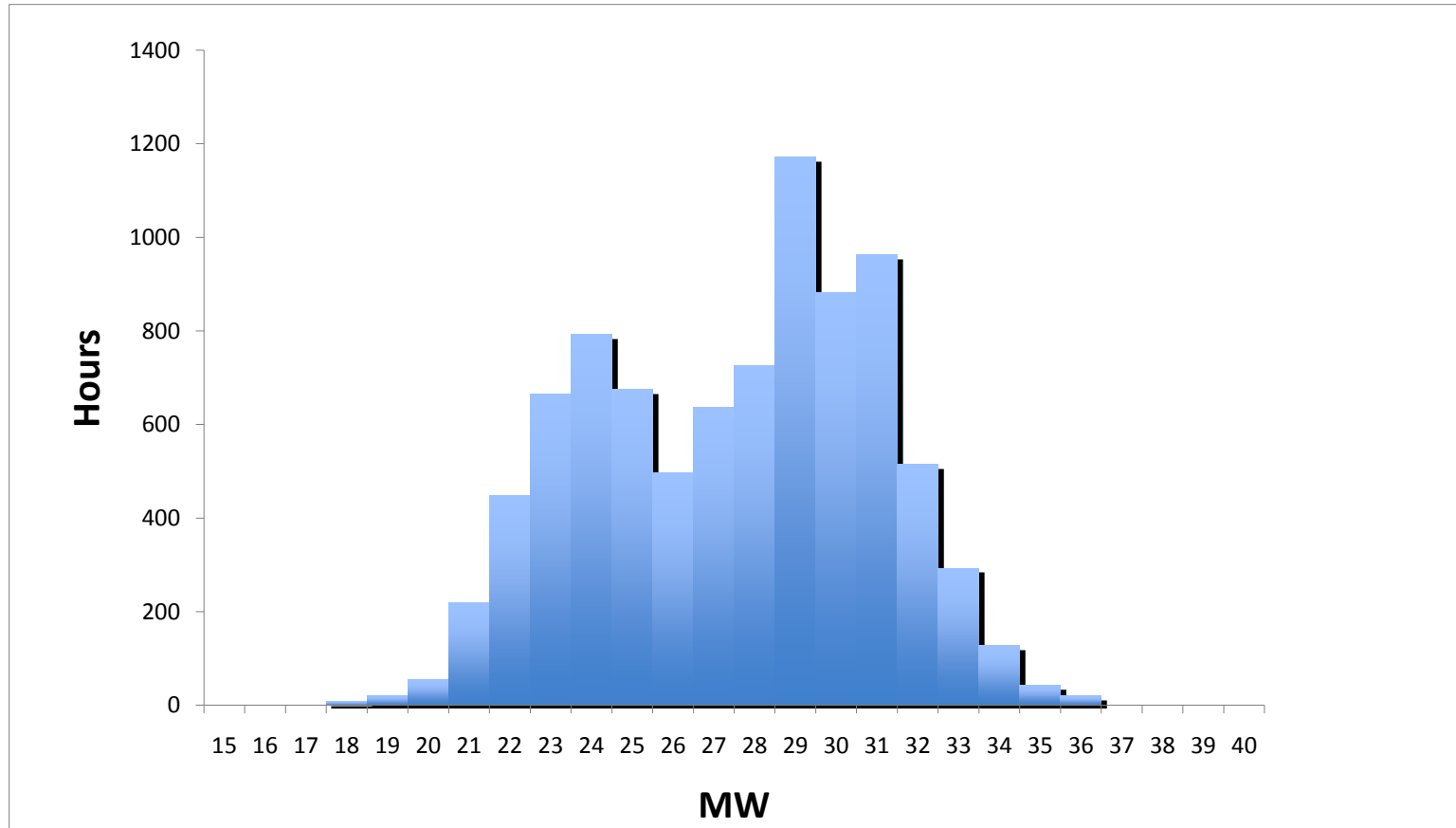
# The ^ Problems

- Does it really work?
- Can it deliver baseload?
- Isn't it too expensive
- Can manufacturing be localised?
- Will jobs be created?

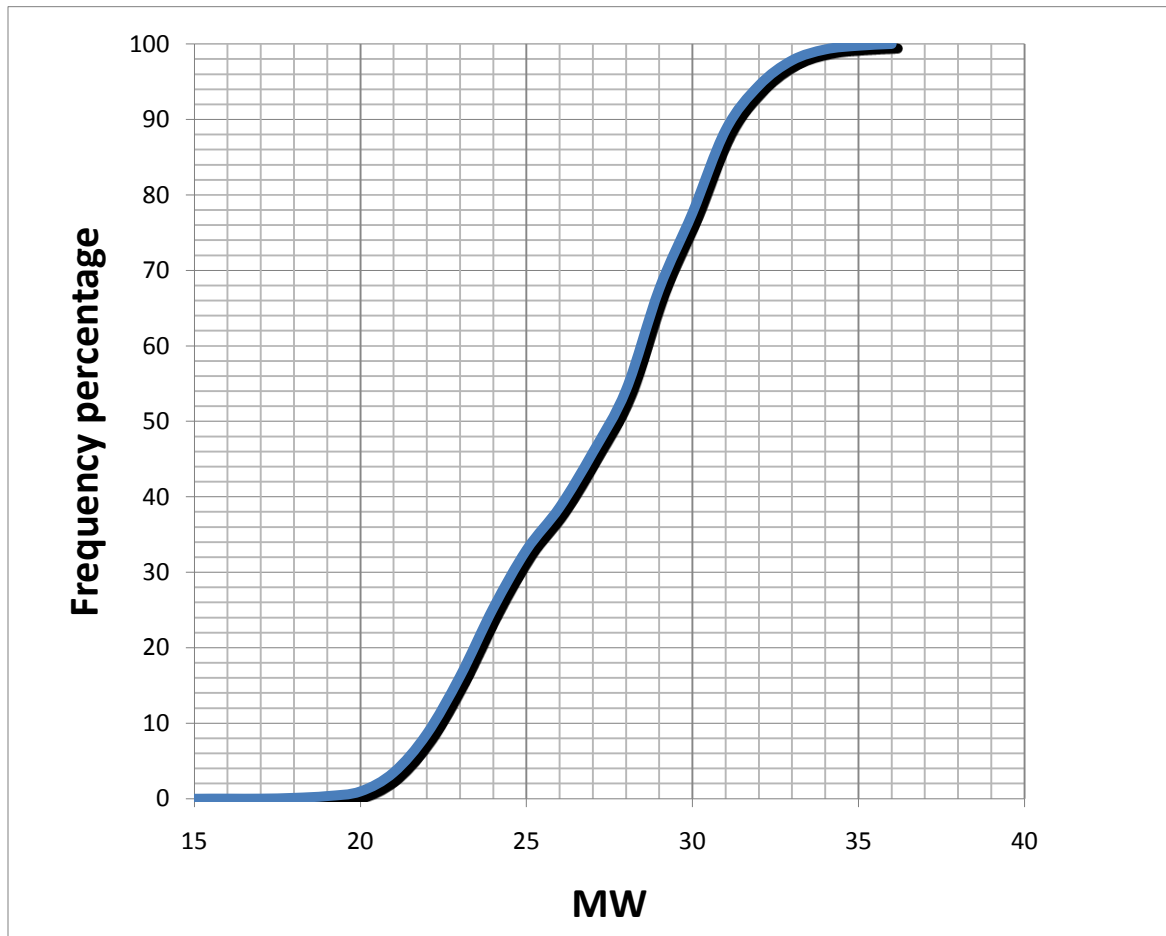
# The Challenge

- To prove that it does work
- To show that it can do better than supply baseload, that it can supply dispatchable 16/7 electricity
- To drive the costs down to be comparable with new build “clean coal”
- To embrace local manufacture

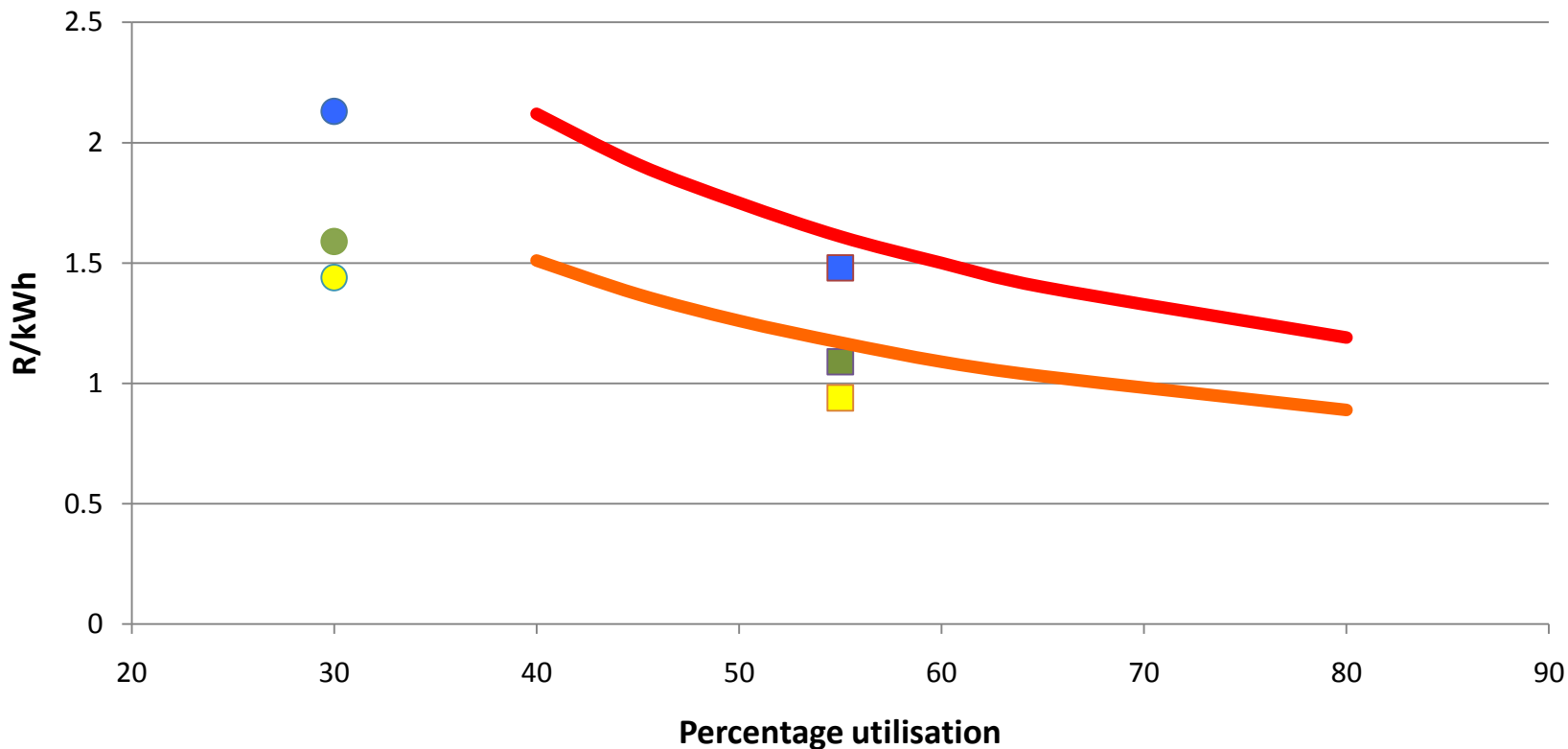
# 2009 Eskom Production Histogram



# Cumulative Production Percentage



## Levelised cost comparisons: CSP tower and coal



- CSP no storage (commercial funding)
- CSP no storage (best funding)
- CSP no storage (best funding with carbon credits)
- Coal
- Clean coal (CCS etc)
- CSP with storage (commercial funding)
- CSP with storage (best funding)
- CSP with storage (best funding with carbon credits)

# The request

- Provide the opportunity to prove operation and dispatchability
- Provide a sufficient allocation to assist in cost reduction
- Assist in the streamlining of permitting and power purchase agreements
- **AND**

# The Plea

Ensure that the IRP2010 is sufficiently flexible and adaptable to be able to undergo real and meaningful change, adaptation and reallocation of the energy supply mix if and when warranted.

.....Lets not miss this revolution.....

# Thank You

[clyde@cepza.com](mailto:clyde@cepza.com)

082 808 5977

